

Embedded Real-Time Systems (AME 3623)

Homework 3

March 3, 2008

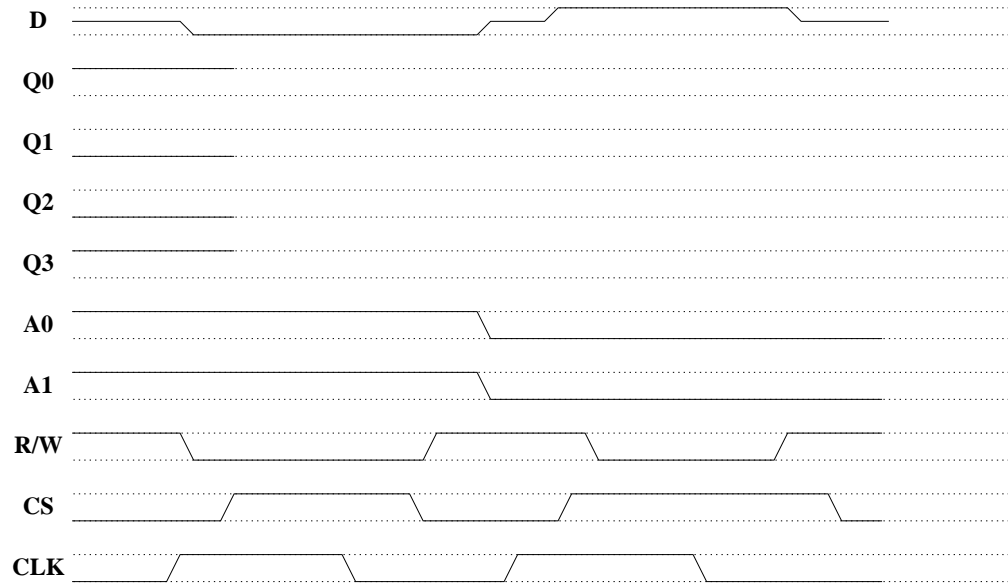
This homework assignment is due on Tuesday, March 11th in class (9:00 am). Your work may be handed in electronically (use the **Homework 3** digital dropbox on D2L), but please bring a hardcopy to class.

This assignment must be done individually: do not share/discuss your answers with others or look at the answers of others.

Question 1

(10pts) Consider the four-element memory “chip” that we discussed in class (each element is “one bit wide”). Given the following timing diagram, fill in the missing traces ($Q0$, $Q1$, $Q2$, and $Q3$).

Hint: first re-examine the rules for writing to and reading from a memory chip.



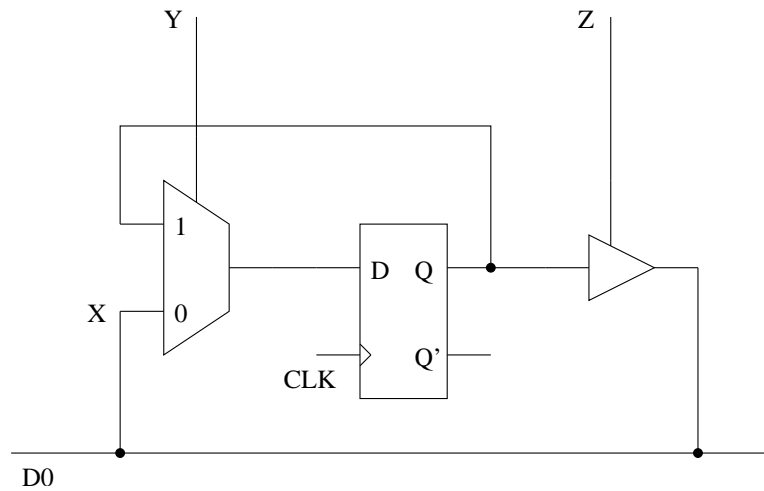
Question 2

(10pts) Consider the same four-element memory chip. Given the following timing diagram, fill in the missing traces (D , $Q0$, $Q1$, $Q2$, and $Q3$).



Question 3

The following circuit is a partial implementation of a 1-bit memory sitting on the data bus $D0$.



1. (10pts) What effect does signal Y have on writing to or reading from the memory?
2. (10pts) What effect does signal Z have on writing to or reading from the memory?

3. (10pts) Assume memory control signals in the previous problems (CS , R/W , $A1$, and $A0$), and that this is memory element number 1 (counting from 0). Give the truth table for Z .

CS	R/W	$A1$	$A0$	Z
0	0	0	0	
0	0	0	1	
0	0	1	0	
0	0	1	1	
0	1	0	0	
0	1	0	1	
0	1	1	0	
0	1	1	1	
1	0	0	0	
1	0	0	1	
1	0	1	0	
1	0	1	1	
1	1	0	0	
1	1	0	1	
1	1	1	0	
1	1	1	1	

4. (10pts) Design a circuit that implements Z .

Question 4

1. (5pts) Briefly explain the function of a *start bit* in serial communication.
2. (10pts) Under what conditions does the LED attached to port B, pin 1 flash?

```
while(1) {  
    c = getchar();  
    if(c >= 'a' && c <= 'z') {  
        PORTB ^= 2;  
    }  
}
```

Question 5

How much time did you spend on this assignment?